

Alexa Fluor® Direct Conjugates

Presented by **CALTAG** Laboratories

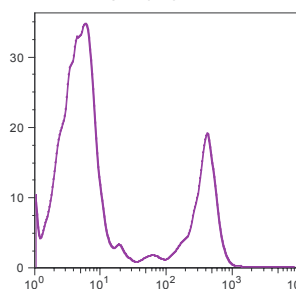
SINGLE-Dye Antibody Conjugates

Alexa Fluor 405

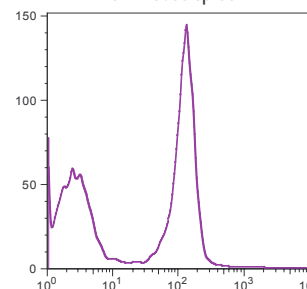
- ◆ A derivative of Cascade Blue®, Alexa Fluor 405 is excited optimally at 402 nm with maximal emission at 421 nm.
- ◆ Great match for the 407 nm line of the krypton laser and the 405 and 408 nm lines of violet diode lasers.
- ◆ Minimal spectral overlap with green fluorophores makes conjugates ideal for multicolor applications.
- ◆ Potentially brighter than UV light-excitable blue fluorophores, whose signal can be obscured by autofluorescence.

INTRODUCING VIOLET REAGENTS !

CD8 Alexa Fluor 405
on human PBL



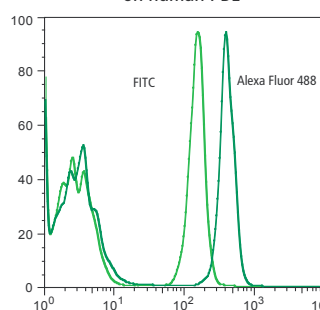
B220 Alexa Fluor 405
on mouse spleen



Alexa Fluor 488

- ◆ Excited at 488 nm with maximal emission at 519 nm
- ◆ Brighter and more photostable than FITC
- ◆ Ideal for both flow cytometry and fluorescence microscopy
- ◆ More than 40 direct conjugates currently available

CD4 Alexa Fluor 488
on human PBL



Filamentous actin in
endothelial cells

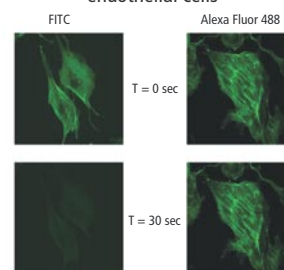
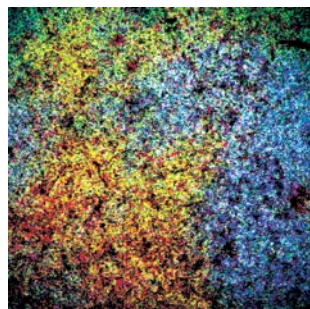


Image courtesy of Molecular Probes, Inc.

Alexa Fluor 647

- ◆ Excited at 633/635 nm with maximal emission at 668 nm
- ◆ Comparable brightness to APC in flow cytometry
- ◆ Alternative to Cy™5 in fluorescence microscopy
- ◆ More than 15 direct conjugates currently available



Mouse thymic section simultaneously stained with anti- α/β TCR Alexa Fluor 647 (blue), CD4 Alexa Fluor 488 (green), and CD8 Alexa Fluor 555 (red), and subsequently analyzed by confocal microscopy. Image courtesy of Dr. B.J. Fowlkes, NIAID, NIH.

The Alexa Fluor dyes and Cascade Blue are registered trademarks of Molecular Probes, Inc., and Invitrogen™ Life Technologies, and are covered by pending and issued patents.

CALTAG
LABORATORIES

1849 Bayshore Highway, Burlingame, CA 94010-1210, USA • Toll-free: 800-874-4007 • Tel: 650-652-0468 • Fax: 650-652-9030 • E-mail: caltag@caltag.com

Website: www.caltag.com

Alexa Fluor® Direct Conjugates

ALEXA FLUOR 405

PRODUCT DESCRIPTION	CLONE	CODE	CLASS	ANTIGEN SPECIES
Mouse anti-Human CD3	S4.1	MHCD0326	ASR	Human
Mouse anti-Human CD4	S3.5	MHCD0426	ASR	Human
Mouse anti-Human CD8	3B5	MHCD0826	RUO	Human
Mouse anti-Human CD45	HI30	MHCD4526	ASR	Human
Rat anti-Mouse CD4	RM4-5	MCD0426	RUO	Mouse
Rat anti-Mouse CD8a	5H10	MCD0826	RUO	Mouse
Rat anti-Mouse CD45R (B220)	RA3-6B2	RM2626	RUO	Mouse
Mouse IgG1 isotype control	N/A	MG126	ASR	N/A
Mouse IgG2a isotype control	N/A	MG2a26	ASR	N/A
Rat IgG2a isotype control	N/A	R2a26	RUO	N/A

ALEXA FLUOR 488

PRODUCT DESCRIPTION	CLONE	CODE	CLASS	ANTIGEN SPECIES
Mouse anti-Human CD4	S3.5	MHCD0420	ASR	Human
Mouse anti-Human CD10	SJ5-1B4	MHCD1020	ASR	Human
Mouse anti-Human CD13	TüK1	MHCD1320	ASR	Human
Mouse anti-Human CD19	SJ25-C1	MHCD1920	ASR	Human
Mouse anti-Human CD33	CD33-4D3	MHCD3320	ASR	Human
Mouse anti-Human Kappa	HP6062	MH10520	ASR	Human
Mouse anti-Human Lambda	HP6054	MH10620	ASR	Human
Goat F(ab') ₂ anti-Human IgG (γ)	Polyclonal	H10120	ASR	Human
Mouse anti-Human IFN-γ	B27	MHCIFG20	RUO	Human
Rat anti-Human IL-2	MQ1-17H12	RHCIL220	RUO	Human
Rat anti-Human IL-4	MP4-25D2	RHCIL420	RUO	Human
Rat anti-Human IL-10	JES3-9D7	RHCIL1020	RUO	Human
Hamster anti-Mouse CD3-e	500A2	HM3420	RUO	Mouse
Rat anti-Mouse CD4	RM4-5	MCD0420	RUO	Mouse
Rat anti-Mouse CD8a	5H10	MCD0820	RUO	Mouse
Rat anti-Mouse CD11b	M1/70.15	RM2820	RUO	Mouse
Hamster anti-Mouse CD11c	N418	MCD11c20	RUO	Mouse
Mouse anti-Mouse CD14	biG53	MCD1420	RUO	Mouse
Rat anti-Mouse CD25	PC61 5.3	RM6020	RUO	Mouse
Rat anti-Mouse CD45R (B220)	RA3-6B2	RM2620	RUO	Mouse
Hamster anti-Mouse/Rat CD61	HMβ3-1	MCD6120	RUO	Mouse / Rat
Rat anti-Mouse CD122 (IL-2Rβ)	TM-β1	MCD12220	RUO	Mouse
Rat anti-Mouse IFN-γ	XMG1.2	RM90020	RUO	Mouse
Rat anti-Mouse IL-4	BVD6-24G2	RM90520	RUO	Mouse
Hamster anti-Mouse α/β TCR	H57-597	HM3620	RUO	Mouse
Mouse anti-Mouse DO11.10 TCR	KJ1-26	MM7520	RUO	Mouse
Rat anti-Mouse Erythroid Cells	TER-119	MTER20	RUO	Mouse
Rat anti-Mouse F4/80 (macrophage)	Cl:A3-1	RM2920	RUO	Mouse
Rat anti-Mouse Granulocytes (Gr-1, Ly-6G/C)	RB6-8C5	RM3020	RUO	Mouse
Mouse Lineage Mixture (200 tests)	N/A	MLM20	RUO	Mouse
Mouse Lineage Mixture (1000 tests)	N/A	MLM20-5	RUO	Mouse
Mouse anti-Human/Mouse ZAP-70	1E7.2	MHZAP7020	ASR	Human / Mouse
Mouse anti-BrdU	3D4	MD5420	RUO	broad
Mouse IgG1 isotype control	N/A	MG120	ASR	N/A
Mouse IgG2a isotype control	N/A	MG2a20	ASR	N/A
Mouse IgG2b isotype control	N/A	MG2b20	ASR	N/A
Mouse IgG3 isotype control	N/A	MG320	ASR	N/A
Mouse IgM isotype control	N/A	MGM20	ASR	N/A
Rat IgG1 isotype control	N/A	R120	RUO	N/A
Rat IgG2a isotype control	N/A	R2a20	RUO	N/A
Rat IgG2b isotype control	N/A	R2b20	RUO	N/A
Hamster IgG isotype control	N/A	HM20	RUO	N/A

ALEXA FLUOR 647

PRODUCT DESCRIPTION	CLONE	CODE	CLASS	ANTIGEN SPECIES
Mouse anti-Human CD8	3B5	MHCD0821	RUO	Human
Hamster anti-Mouse CD3-e	500A2	HM3421	RUO	Mouse
Rat anti-Mouse CD4	RM4-5	MCD0421	RUO	Mouse
Rat anti-Mouse CD8a	5H10	MCD0821	RUO	Mouse
Rat anti-Mouse CD45R (B220)	RA3-6B2	RM2621	RUO	Mouse
Rat anti-Mouse CD117 (c-Kit)	2B8	RM6221	RUO	Mouse
Rat anti-Mouse IL-4	BVD6-24G2	RM90521	RUO	Mouse
Hamster anti-Mouse α/β TCR	H57-597	HM3621	RUO	Mouse
Mouse anti-Mouse DO11.10 TCR	KJ1-26	MM7521	RUO	Mouse
Rat anti-Mouse F4/80 (macrophage)	Cl:A3-1	RM2921	RUO	Mouse
Rat anti-Mouse Granulocytes (Gr-1, Ly-6G/C)	RB6-8C5	RM3021	RUO	Mouse
Rat anti-Mouse Ly-6A/E (Sca-1)	D7	MSCA21	RUO	Mouse
Mouse IgG2a isotype control	N/A	MG2a21	RUO	N/A
Rat IgG1 isotype control	N/A	R121	RUO	N/A
Rat IgG2a isotype control	N/A	R2a21	RUO	N/A
Rat IgG2b isotype control	N/A	R2b21	RUO	N/A
Hamster IgG isotype control	N/A	HM21	RUO	N/A

Alexa Fluor-conjugated antibodies to Human Markers are provided at 100 tests in 0.5 ml, unless otherwise indicated.

Alexa Fluor-conjugated antibodies to Mouse Markers are provided at 100 ug in 1.0 ml, unless otherwise indicated.

Alexa Fluor-conjugated Isotype Control antibodies are provided at 50 ug in 0.5 ml, unless otherwise indicated.

ASR • ANALYTE SPECIFIC REAGENT. ANALYTICAL AND PERFORMANCE CHARACTERISTICS ARE NOT ESTABLISHED. FOR IN VITRO DIAGNOSTIC USE.

RUO • RESEARCH USE ONLY ... NOT FOR THERAPEUTIC OR IN VITRO DIAGNOSTIC USE.

P/N L20091 Rev. 03-04 DCO# 001453